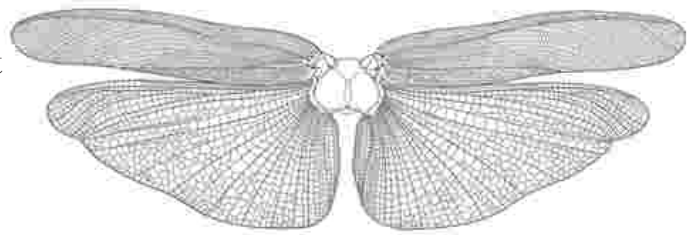


# SYMBIOSIS

Donna Ong, an artist with training in Architecture, uses her appreciation of engineering and structures not to section buildings, but to dissect insects and their biological appendages.



In her black-ink drawings, the closely observed renderings of the insect wings draw analogy to the plans of the buildings.



## *Donna Ong*

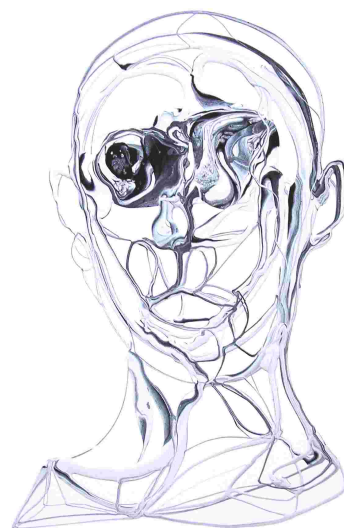
Donna Ong is better known for her sculpture installations utilising furniture, found objects and drawing. However, she won the Sefton Open Competition in 2D Art, UK in 2004. This was the first time in the history of the competition that a photographic image was awarded first prize. The English Daily Post Newspaper described the winning entry as “morbid” and “haunting”.

A resident in England for the past nine years, Ms Ong graduated with a degree in architecture from University College London (UCL) and one in fine art from Goldsmiths College. She has won several awards and scholarships for her work during her education - the two most prestigious being the Singapore Undergraduate Scholarship from UCL and the Shell-NAC Scholarship from the Singapore Arts Council and Shell. Her work has been exhibited in several group shows both locally as well as overseas. Her upcoming shows include the “Singapore Biennale” in September 2006.

# SYMBIOSIS

Chng Nai Wee, an artist with training in Medicine, uses his understanding of anatomy and histology to show the innards of the human body and the natural world.

In his panels, the intricate organisation of tissues draws attention to the self-replicating nature of cells in a fractal and complex mathematical progression.



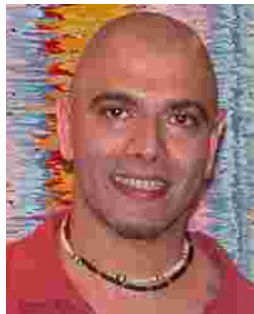
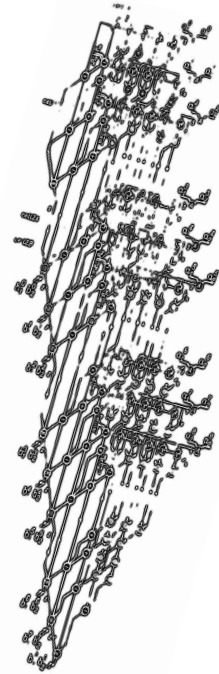
## *Chng Nai Wee*

Visual artist, Chng Nai Wee received the National Arts Council Young Artist Award (1999), Singapore Art Society Tan Tsze Chor Award (1995), and Honorable Mentions at the Philip Morris Asean Art Awards (1994). His exhibitions include the inaugural shows at the Esplanade with mega-pneumatic structures, “Like or Not?” and at the Sculpture Square with the metalwork installation, “Biotics”. In 1991, he showed a 12-screen video installation, “The Sin of Apathy”, at the National Sculpture Show. His solo shows include “Pantheon - Innards of Consciousness” (2003), “Moleculux - Luminescent Bodies in Hyperspace” (2002), “Biotechnics” (1997), “Recent Works” (1994), and “New Works” (1991). Dr Chng documented the local visual arts scene through [www.singaporeart.org](http://www.singaporeart.org) and served in the Arts Education Council, National Arts Council Resource Panel, Biopolis Arts Committee and Nokia Singapore Art Committee.

# SYMBIOSIS

Rajinder Singh, an artist with training in Mathematics, uses his knowledge of physical and computational science, to explore the dynamics of fluid motion and circuit design.

In his painted canvases, his circuit designs are like a cascading neuronal nets and his schematics suggest cartographic reference to an alternate universe.



## *Rajinder Jit Singh*

Visual artist, Rajinder Singh is self-taught and has been painting, sculpting and making films for many years now. Having held several successful exhibitions, his art has been purchased by prominent households and businesses from around the world. Dr Singh has a PhD in Mathematics and an MBA from California State University.

His previous solo shows include the successful “Gridlocked” (2003), “I can smell you bad breath” (2005) and “I coME from over tHERE” (2006). He hosts a popular Singapore art blog (<http://sighhtoracle.blogspot.com>) which runs a commentary on the Singapore art scene with reviews, interviews and philosophical discourses. His work has been shown in contemporary, international art portals such as SPUNK and DUUDLE and has been described as modern and carries a message of change. He is presently doing his postgraduate studies in Philosophy of Art at the National University of Singapore.